

REMAINING WATER-WISE in Sierra Madre



- What is a drought?
- Is the drought over?
- Where does Sierra Madre's water come from?
- What is the status of Sierra Madre's water supply?
- How does Sierra Madre restore its groundwater supplies?
- How does Sierra Madre support water conservation?

What is Drought?



An extended period when a region notes a deficiency in its water supply whether surface or groundwater.

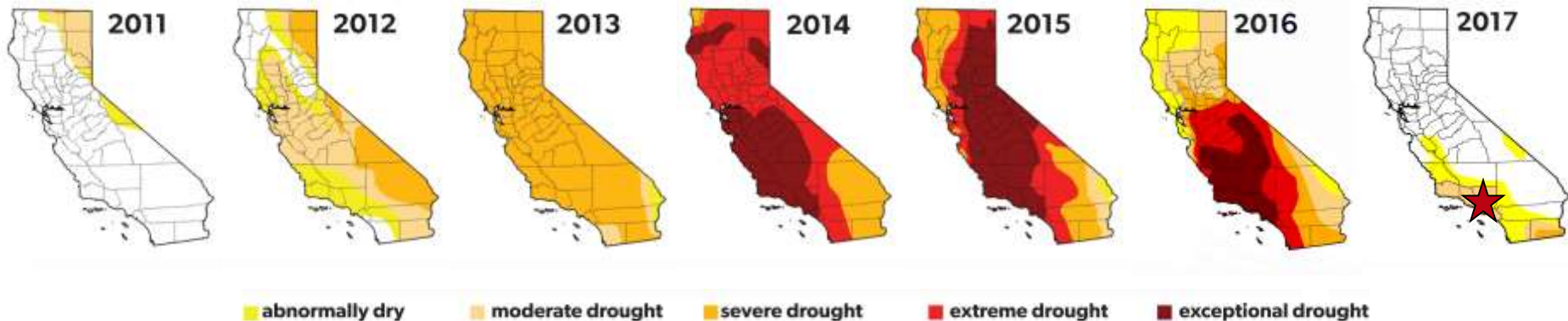


Is the Drought Over?



Governor Brown - April 7, 2017:

“This drought emergency is over, but the next drought could be around the corner. Conservation must remain a way of life.”



Drought Impacts Remain With Us



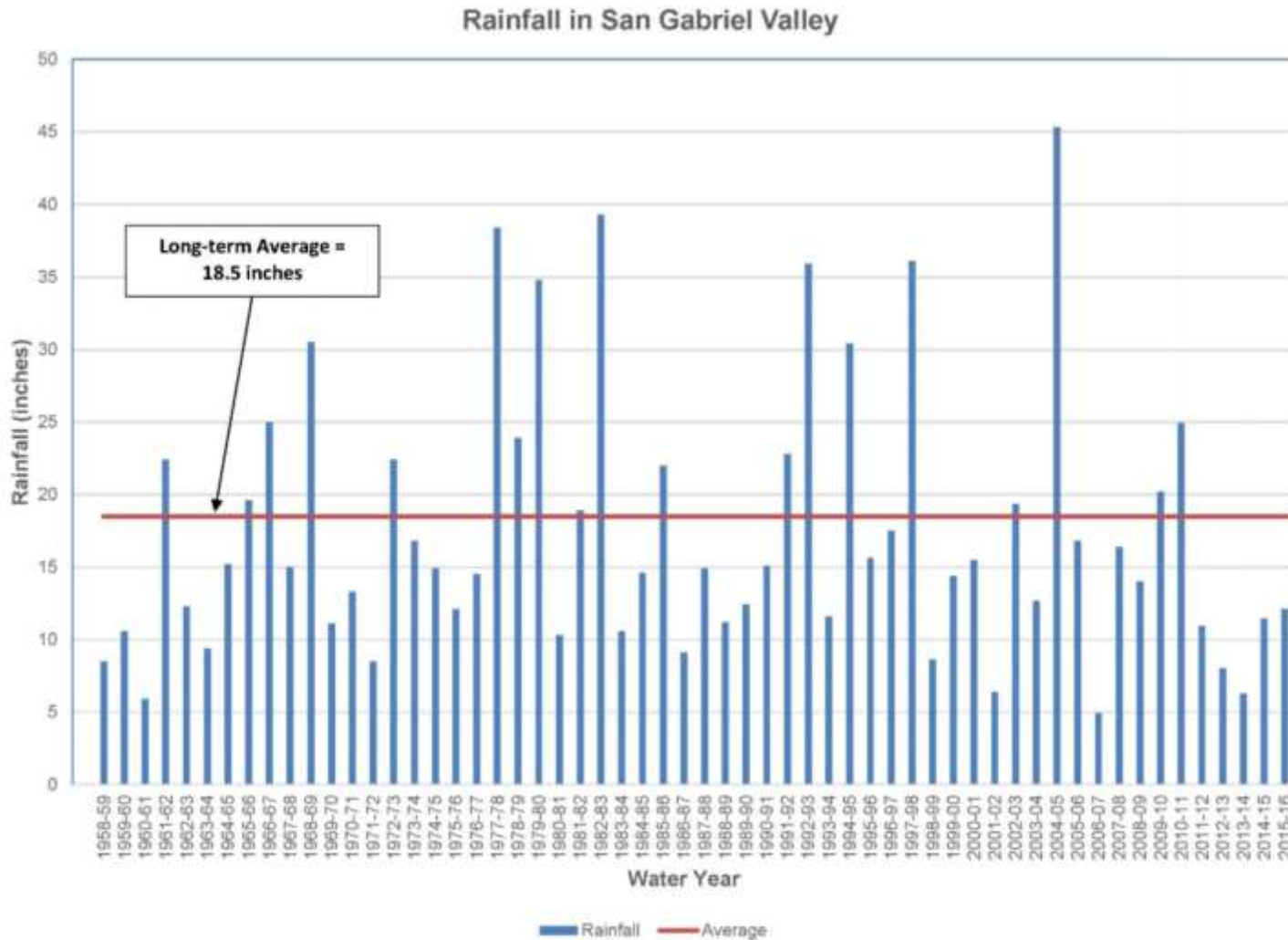
- Wells effectively ran dry in October 2013
- Demand is greater than wells provide
- Wells have risen 40+ feet due to water management practices and purchases from SGVMWD





Four Drought Cycles since 1976!

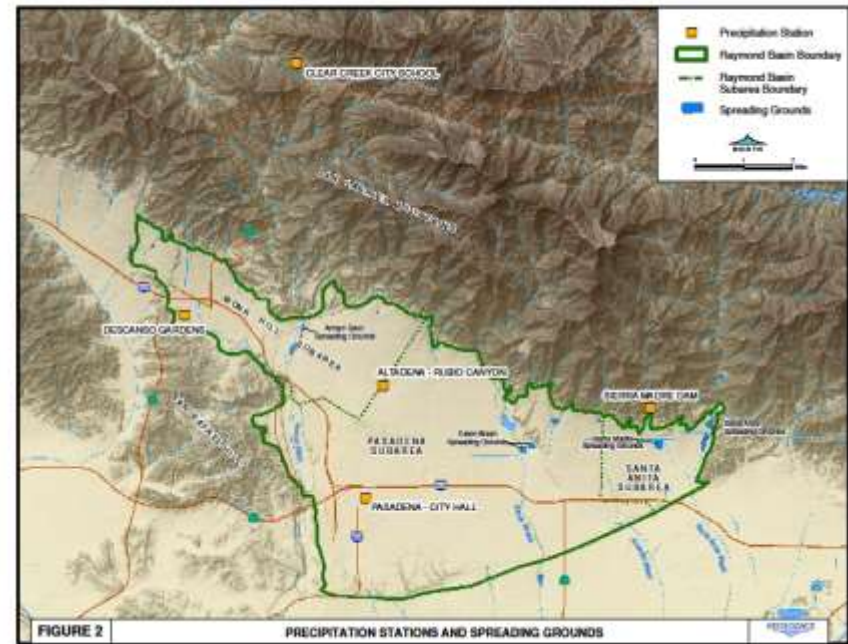
Most Years are Below Average!



Where Does Sierra Madre's Water Come From?

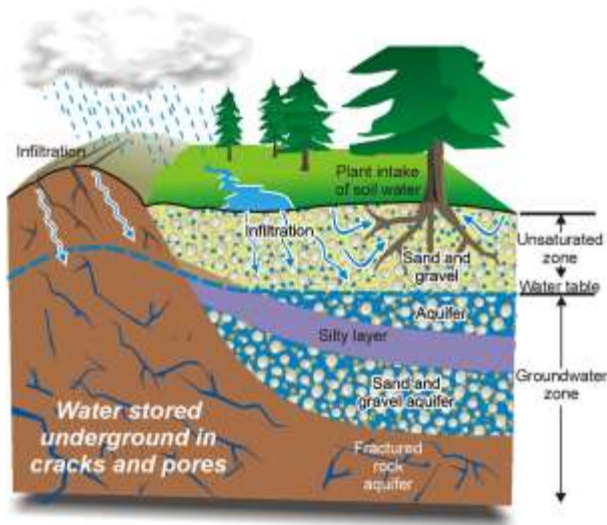


- 100% Groundwater from Raymond Basin!
 - Groundwater from Santa Anita Sub-Area wells in the East Raymond Basin
 - Natural spring tunnel located in the foothills
 - Water Imported by San Gabriel Valley Municipal Water District



Raymond Basin Santa Anita Sub-Area

How Does Sierra Madre Restore its Groundwater Supplies?



“Mother Nature” and the Water Cycle

Local Spreading Grounds Feed Water Down to Local Wells

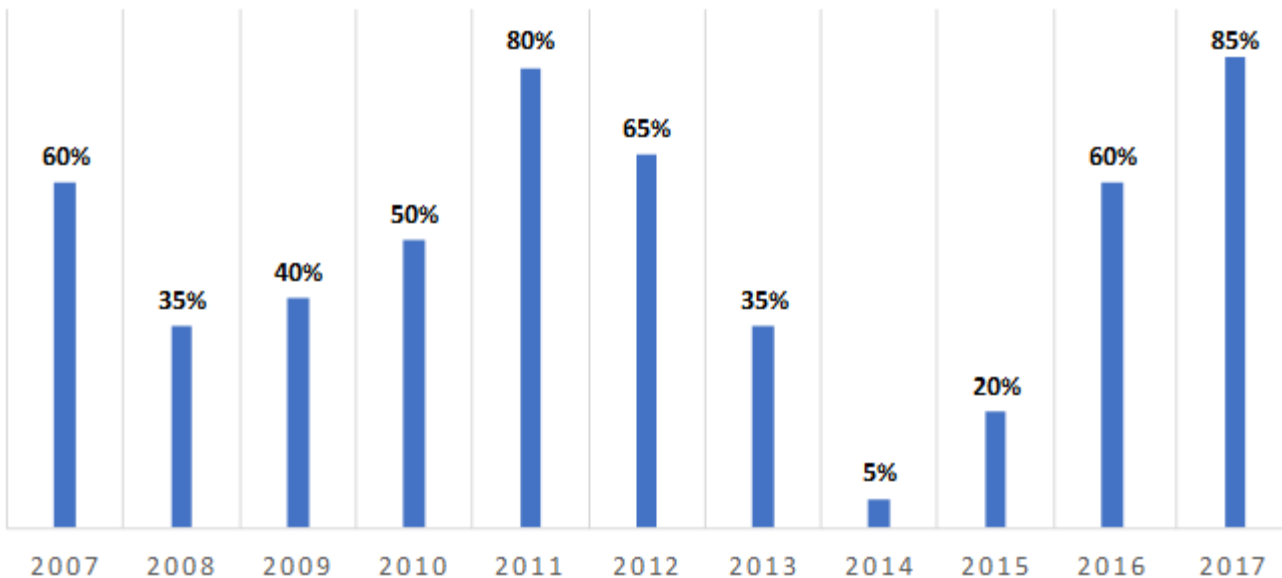
San Gabriel Valley Municipal Water District Delivers Imported Water via the State Water Project



Threats to Imported Water Deliveries

- Flood damage to Oroville Dam
- Endangered Delta Smelt Fish impacts Delta water supply
- Quagga Mussel infiltration impacts State Water Project water deliveries

STATE WATER PROJECT:
ANNUAL ALLOCATION



How does Sierra Madre Support Water Conservation?



- AMI metering (leak detection)
- City Facility Water-Use Management (parks, city hall, etc.)
- Partnership with San Gabriel Valley Municipal Water District



Partnership with San Gabriel Valley Municipal Water District



Rain Barrel
Up to \$100



**Smart Irrigation
Controller** *Up to
\$150*



**Water-Efficient
Washer**
Up to \$150



**Commercial
Waterless Urinal**
Up to \$150



**High-Efficiency
Toilet (HET)**
Up to \$100



Sierra Madre Elementary School



Sierra Madre City Hall



Sierra Vista Park

Partnership with San Gabriel Valley Municipal Water District



Water Well Worth Conserving

Home Water Survey: Learn more about the value of water and make water conservation a way of life! Place an (X) next to your best answer for each question. When done, please print your name, have your parent sign and give the completed survey to your teacher.

KNOW YOUR H₂O

YES	NO	SAVING WATER INDOORS
<input type="radio"/>	<input type="radio"/>	Does your home have water-saving faucet flow-restrictors in sinks, baths and showers in the kitchen, bathrooms, and laundry room?
<input type="radio"/>	<input type="radio"/>	Does your home have low-volume or high-efficiency toilets?
<input type="radio"/>	<input type="radio"/>	Does your home have a water-efficient clothes washer or dish washer?
<input type="radio"/>	<input type="radio"/>	Do you run your dish washer and clothes washer with full loads only?
<input type="radio"/>	<input type="radio"/>	Have you recently checked for or repaired leaky faucets, pipes or toilets?
<input type="radio"/>	<input type="radio"/>	Do you turn off the faucet when brushing teeth or shaving?
<input type="radio"/>	<input type="radio"/>	Could you take shorter showers (5 minutes or less)?
YES	NO	SAVING WATER OUTDOORS
<input type="radio"/>	<input type="radio"/>	Have you recently checked for leaky faucets, pipes, hoses or sprinklers?
<input type="radio"/>	<input type="radio"/>	Do hoses have shut-off nozzles for washing your car or watering plants?
<input type="radio"/>	<input type="radio"/>	Do you have water saving devices such as a smart irrigation controller, drip irrigation rotating sprinkler nozzles?
<input type="radio"/>	<input type="radio"/>	Are you following your city's watering restrictions and do you turn off your irrigation during rainy, cloudy or cooler weather?
<input type="radio"/>	<input type="radio"/>	Have you installed rain barrels that capture rain/stormwater from roofs, leaders and gutters?
<input type="radio"/>	<input type="radio"/>	Do you water your lawn, plants and garden areas in the cooler, early morning hours when less evaporation occurs?
<input type="radio"/>	<input type="radio"/>	Do you use a broom or blower to clean driveways and sidewalks instead of a hose?
<input type="radio"/>	<input type="radio"/>	If you have a pool or spa, do you have a cover that prevents evaporation?
<input type="radio"/>	<input type="radio"/>	Have you reduced turf, planted California Native vegetation which use 1/7th as much water, and covered garden areas with water-saving bark chips, mulch, decomposed granite, rocks and pebbles?

H₂O Girl
SGVMD's Water-saving Mascot

Student Name _____ Parent Signature _____

Sierra Madre School

Printed on recycled paper

SAN GABRIEL VALLEY MUNICIPAL WATER DISTRICT
www.sgvmd.org

Banners and Signs

School/Student "Home Water Survey"

Water Conservation Information



City of Sierra Madre Watering Schedule:

- Even-Numbered Addresses:
Mondays and Thursdays
Before 10:00 AM and After 4:00 PM
- Odd-Numbered Addresses
(and those ending in fractions):
Tuesdays and Fridays
Before 10:00 AM and After 4:00 PM

Educational Websites:

- www.cityofsierramadre.com
- www.sgvwd.org
- www.bewaterwise.com
- www.socalwatersmart.com
- www.theodorepayne.org
- www.calscape.org
- www.saveourwater.com



SAN GABRIEL VALLEY
MUNICIPAL
WATER DISTRICT



WWW.SGVMWD.ORG



REMAINING WATER-WISE in Sierra Madre