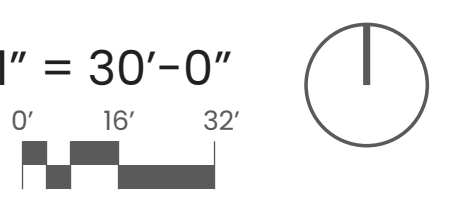
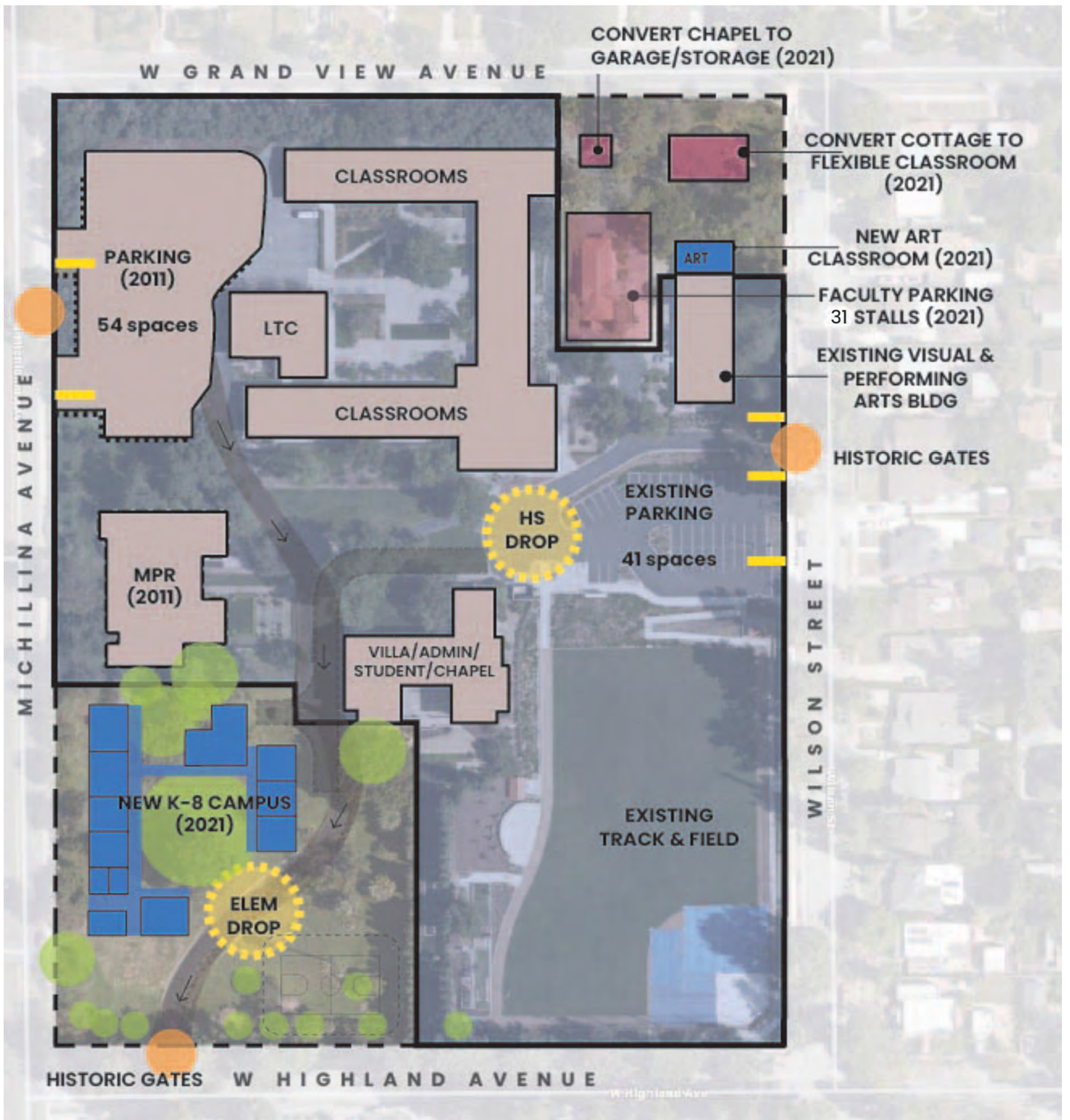


SIERRA MADRE CITY  
FIRE HYDRANT  
2951 gpm  
MICHILLINDA/HIGHLAND



# Existing Site Plan





Upper School to remain, including Wilson drop off zone, Track and Field, per Master Plan (2011)  
 Multi-Purpose Building per Master Plan (2011)  
 Michillinda Parking per Master Plan (2011)  
 Arts Building to Remain, per Master Plan (2011)  
 New Art Classroom Addition (1200sf)  
 Historic Villa, Gates and Internal Curved Road to remain

New Lower School in SW quadrant of campus  
 New classrooms and admin (25,000sf)  
 Maintain existing curved road and historic gates for new internal drop-off zone  
 New fire truck access and hammerhead turn around  
 New Flexible Classroom Space at Caretaker Cottage Building (2,080sf)  
 New Faculty Parking at Wilson, demo existing non-historic office structure



## Areas to be Amended in the Proposed Site Master Plan Update

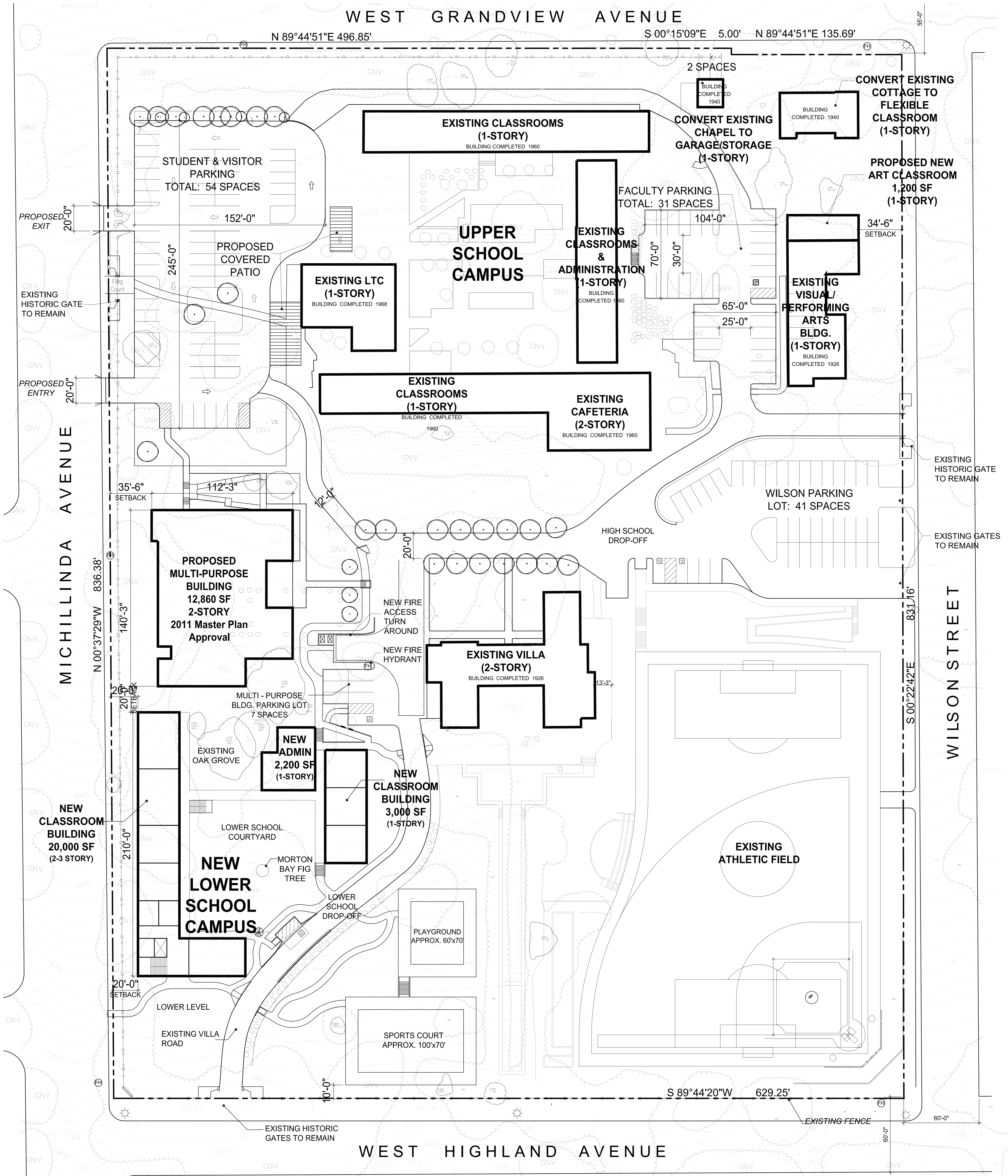
07/30/2021



WEST GRANDVIEW AVENUE

N 89°44'51"E 496.85'

S 00°15'09"E 5.00' N 89°44'51"E 135.69'

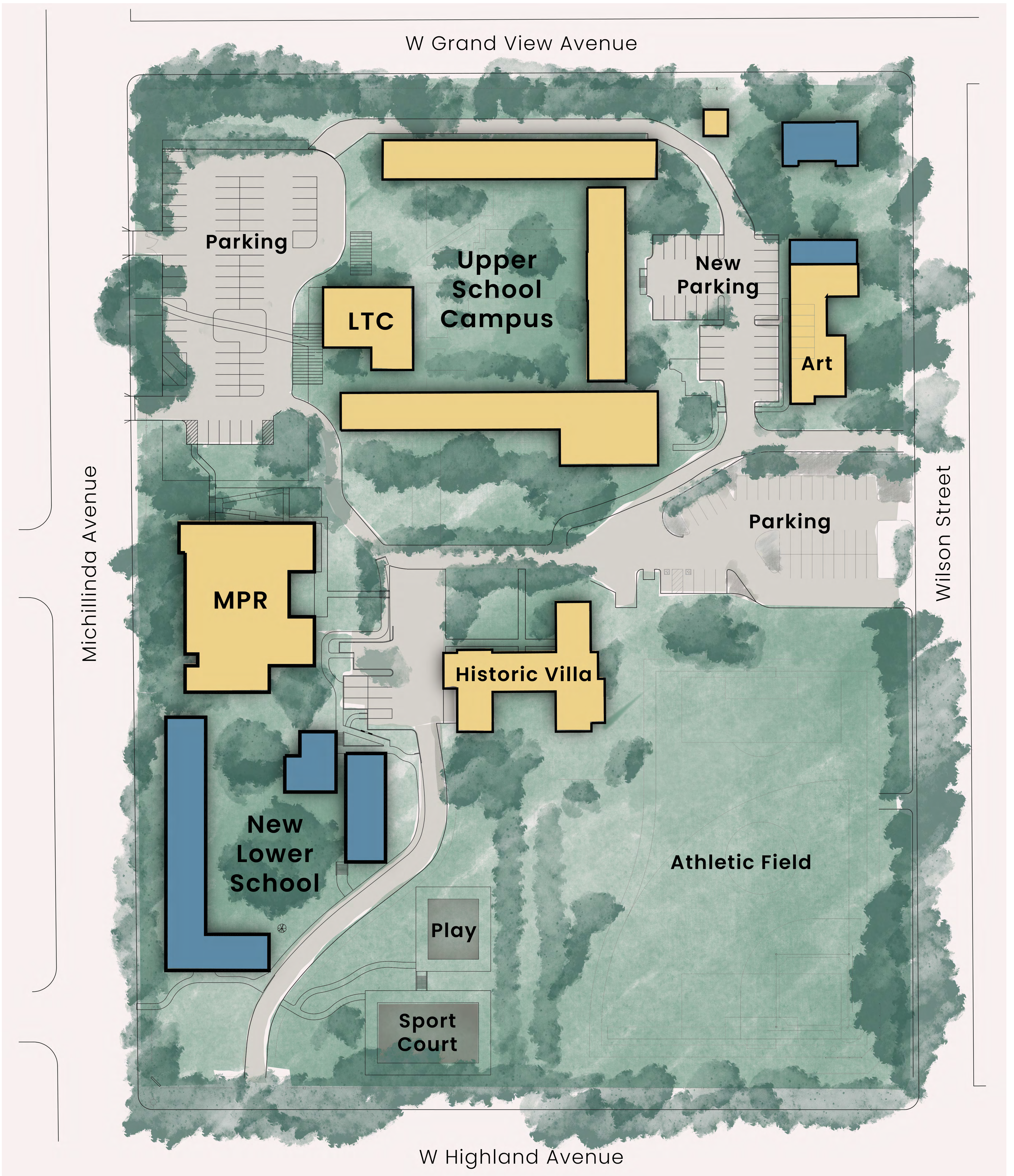


-  BUILDING FOOTPRINT
-  OAK TREE
-  FIRE HYDRANT
-  STREET LIGHT
-  HISTORIC VILLA GATES

1" = 30'-0"  
0' 15' 30'

Updated Master Plan - 2021





## Colored Campus Plan

1" = 30'-0"  
 0" 16" 32"

07/30/2021





Carob at Michillinda Setback



Pindo palms north of New Classroom Building



Queensland Kauri north of New Administration Building



Strawberry Tree north of New Administration Building



Indian Laurel at SW corner of Villa



Deodar Cedar at Michillinda Setback



Ribbon Gum along Michillinda



Jacaranda at SW corner



Canary Island Pine Street Trees along Highland Avenue



Coast Live Oak preserved throughout Site



Morton Bay Fig preserved at new Courtyard



Canary Island Date Palm preserved throughout site

- Plant Legend**
- Existing Tree (Refer to Consulting Arborist's Report for exact species description)
  - Existing Canary Island Palm
  - New Accent Tree
  - New Medium Shrub Massings
  - New Accent Shrub Massings
  - New Turf Area

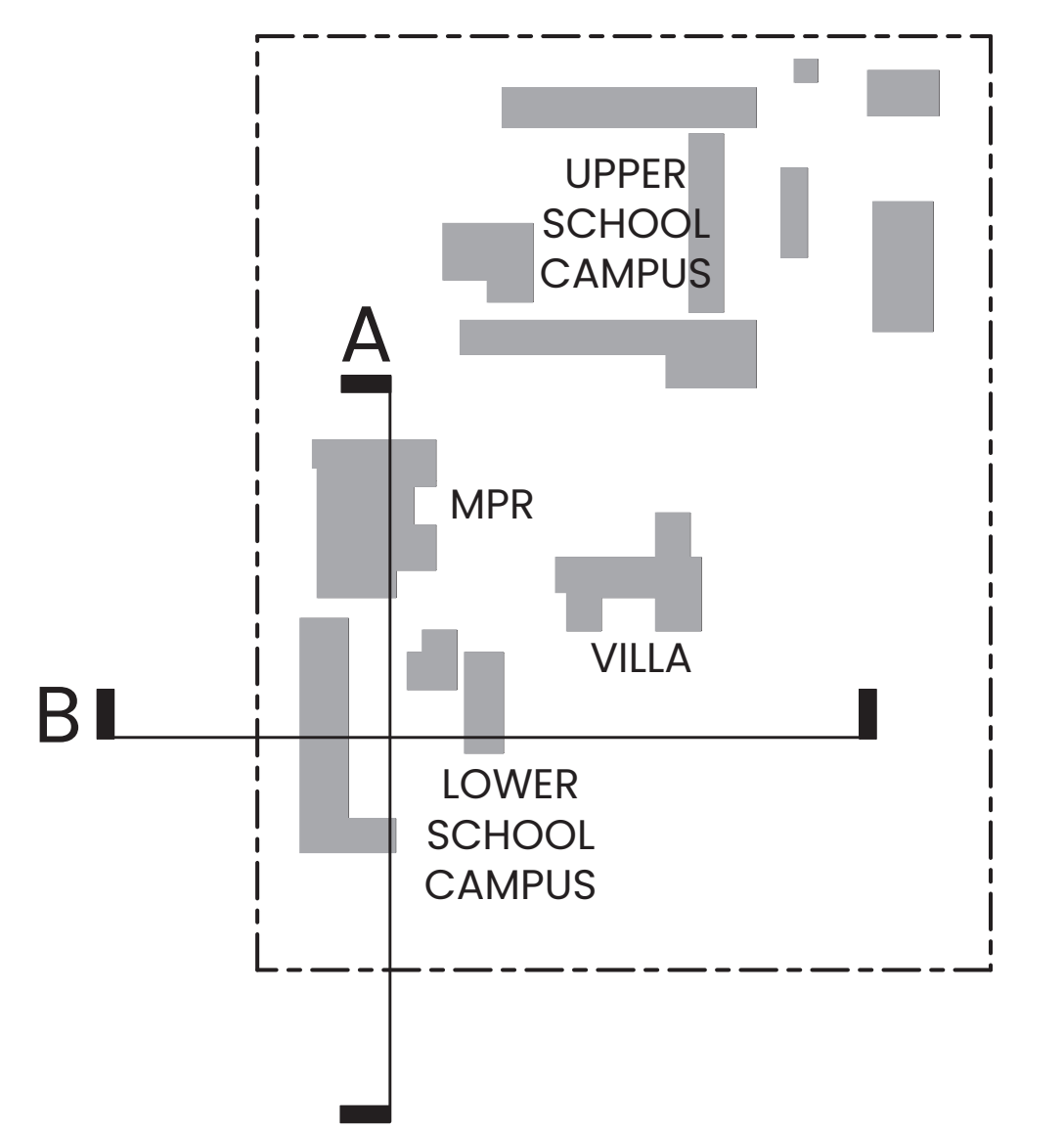
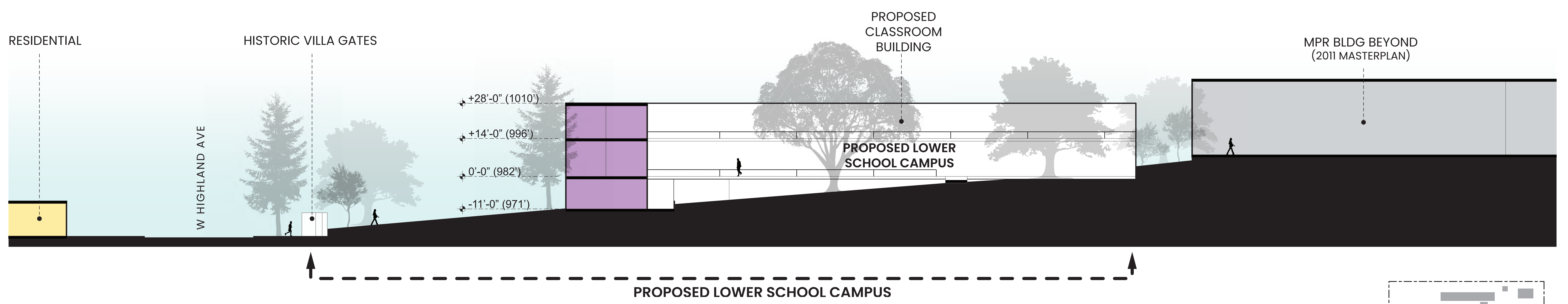
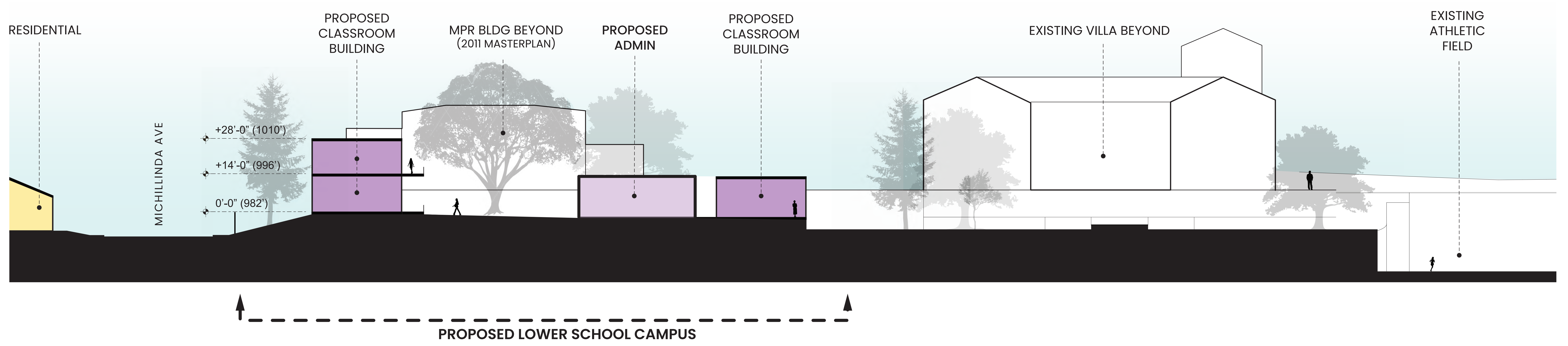
- Legend**
1. Existing Hedge, fill in gaps with 5gal. sized plant material
  2. Existing 5' High Chainlink Fence with vines, fill in Gaps with 5 gal. plant material
  3. Existing 6' High Wall, fill in gaps with medium and large shrub massings
  4. Existing Oak Trees and Canopy
  5. Existing Canary Island Pine Street Trees
  6. Existing Jacaranda at Campus Signage
  7. Existing Morton Bay Fig



Camphor at edge of north play area

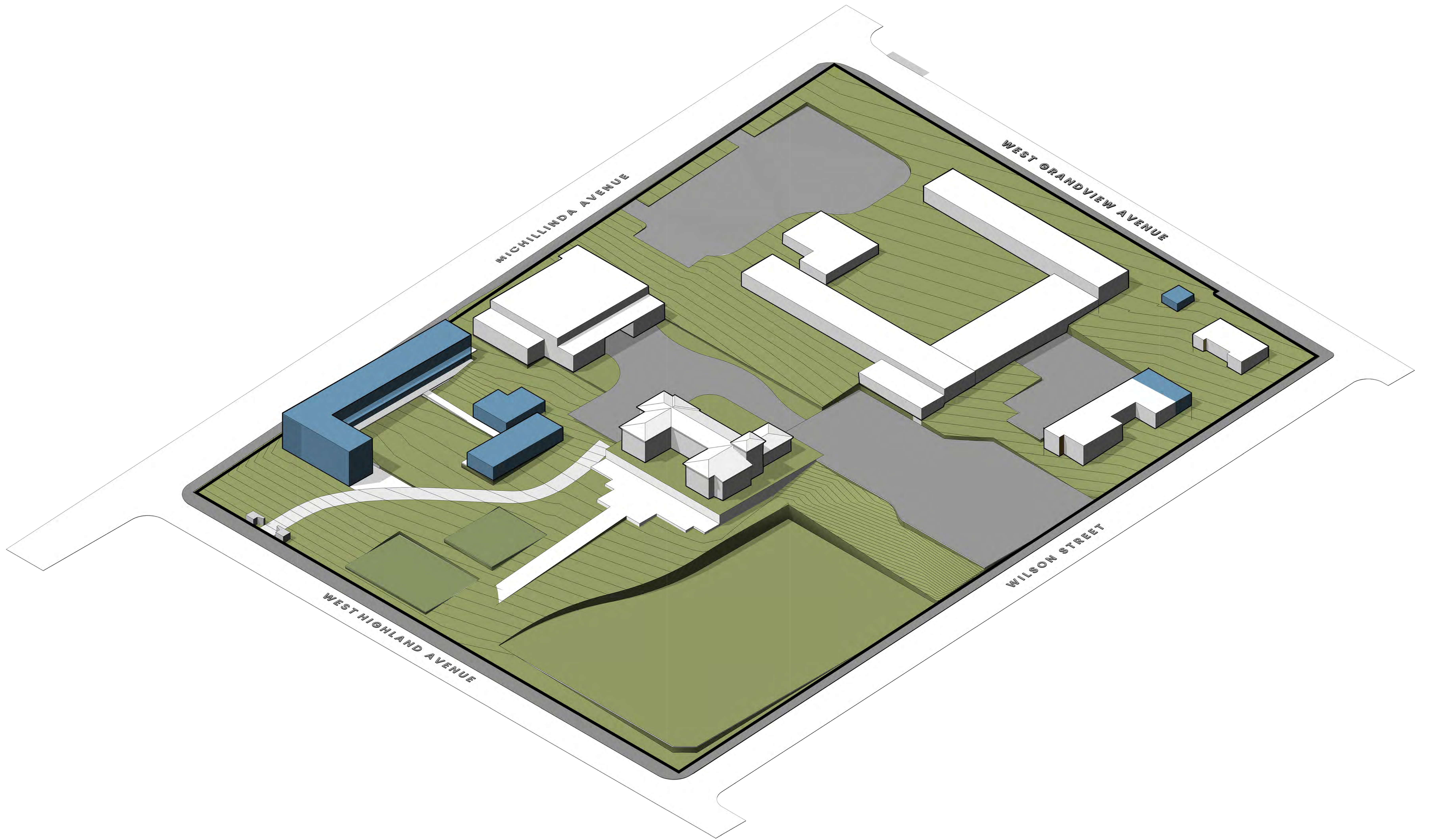
# Concept Landscape Plan at New Lower School





# Sectional Study





## Campus Massing Study





## Perspective View from Michillinda





## Perspective View from Highland



WEST GRANDVIEW AVENUE

UPPER CAMPUS

CHAPEL

CARETAKER

MICHILLINDA PARKING LOT

CLASSROOMS

CLASSROOMS & ADMIN

FACULTY OFFICES

ART STUDIOS

LTC

CLASSROOMS CAFETERIA

HIGH SCHOOL DROP OFF

WILSON PARKING LOT

VILLA

PRAYER GARDEN

SOCCER / SOFTBALL FIELD

LOWER CAMPUS

TK - 8 DROP OFF

EXIT

WEST HIGHLAND BLVD.

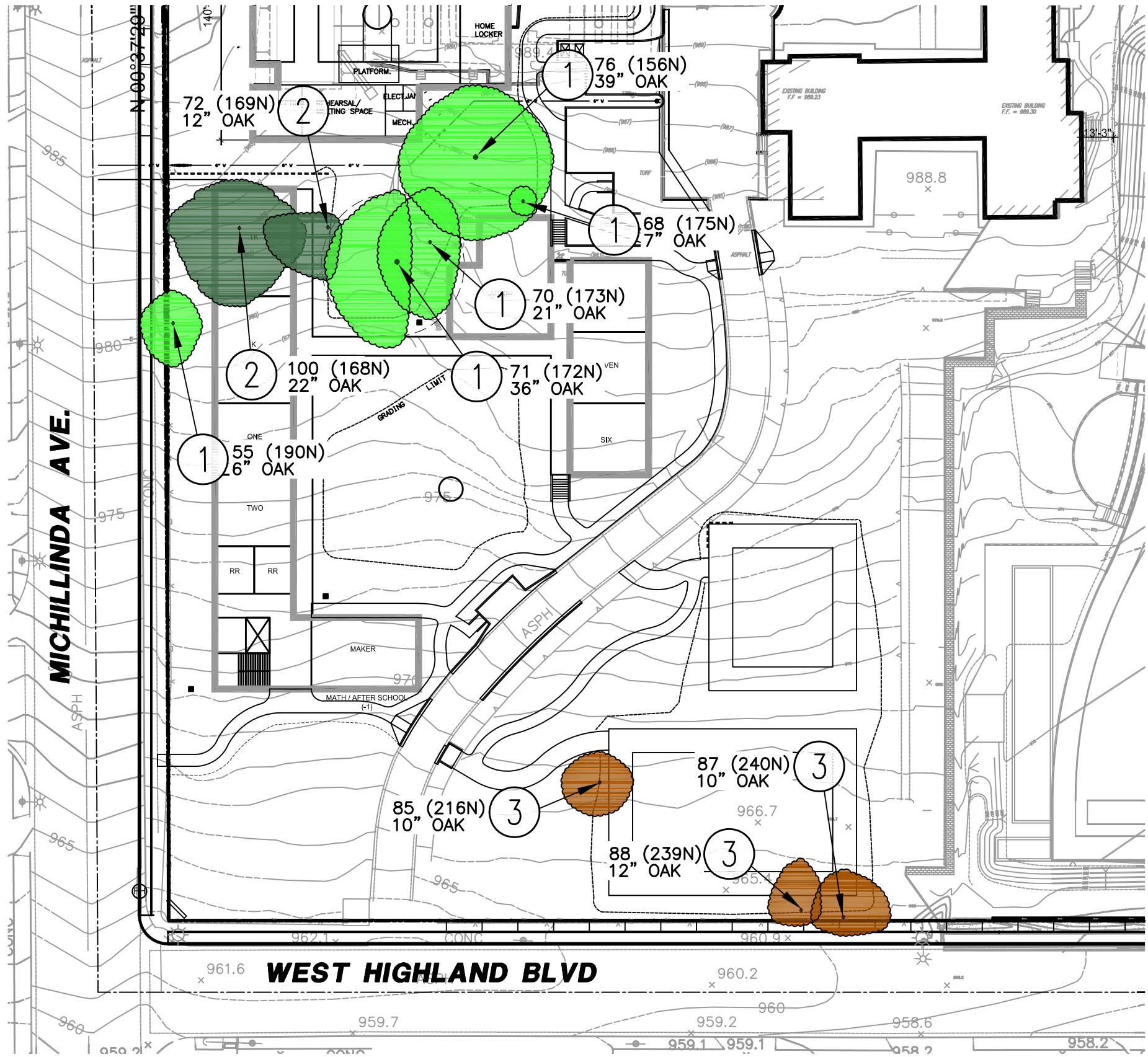
ELEMENTARY ENTRANCE

MICHILLINDA AVENUE

WILSON STREET







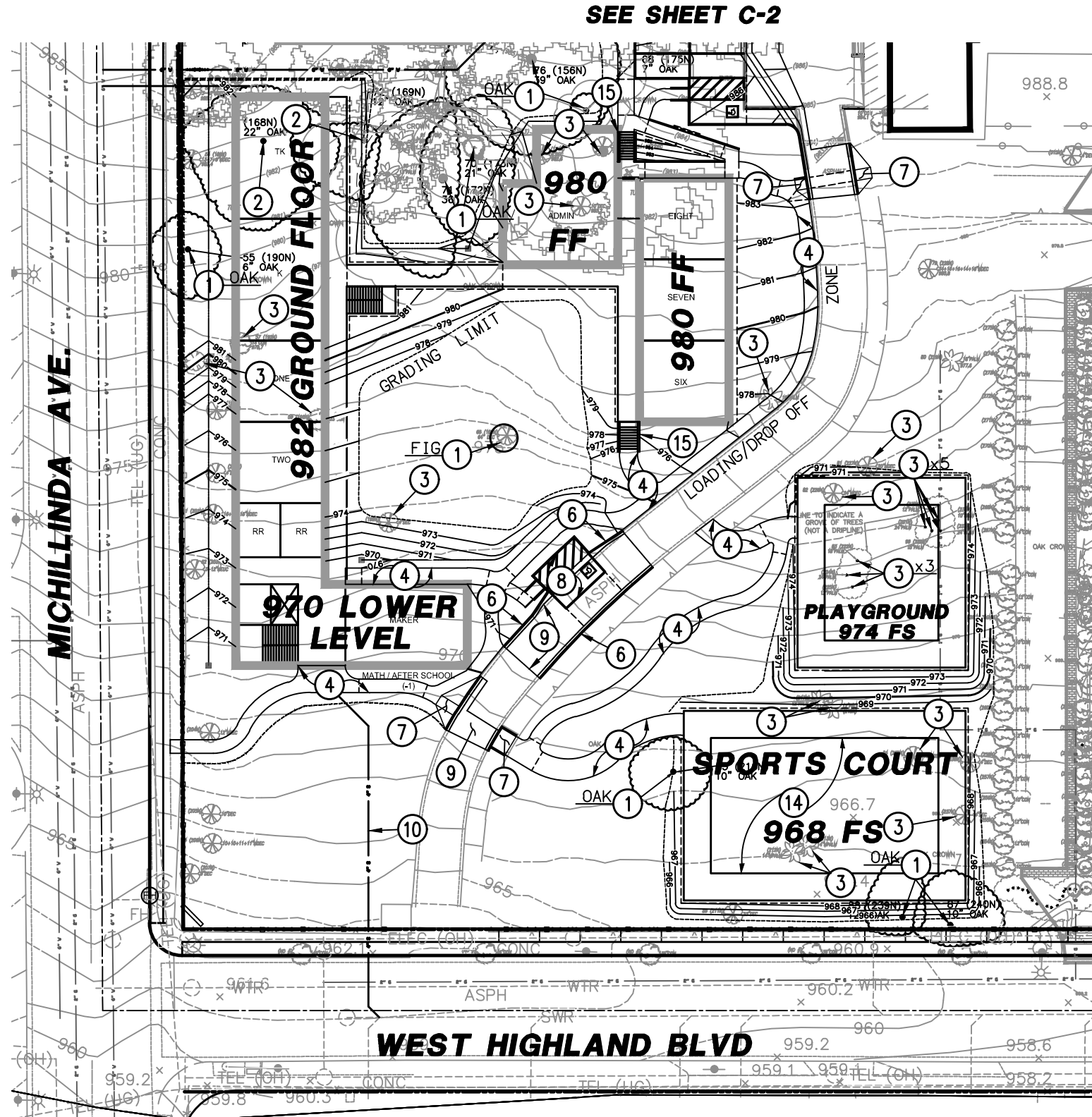
**CONSTRUCTION NOTES**

- ① PROTECT OAK TREE IN PLACE
- ② REMOVE OAK TREE
- ③ SPECIAL CONSIDERATION

**RKA**  
**CONSULTING GROUP**  
 398 LEMON CREEK DRIVE - SUITE E - WALNUT - CA - 91789  
 (909) 594-9702 - FAX (909) 594-2658  
 WWW.RKAGROUP.COM

**ALVERNO HEIGHTS ACADEMY**  
**TREE PRESERVATION PLAN**  
 DATE: 6/29/21 SCALE: DRAWN BY: KPEDERSEN SHEET: 1





SEE SHEET C-2

**CONSTRUCTION NOTES**

- SITE IMPROVEMENTS**
- ① PROTECT IN PLACE.
  - ② REMOVE OAK TREE
  - ③ REMOVE TREE
  - ④ CONSTRUCT 4" PCC SIDEWALK
  - ⑤ CONSTRUCT CURB
  - ⑥ CONSTRUCT CURB AND GUTTER
  - ⑦ CONSTRUCT CURB RAMP
  - ⑧ CONSTRUCT ACCESSIBLE LOADING ZONE
  - ⑨ CONSTRUCT AC PAVEMENT
  - ⑩ INSTALL 4" SEWER
  - ⑪ INSTALL FIRE HYDRANT
  - ⑫ INSTALL 6" FIRE WATER LINE
  - ⑬ INSTALL DOMESTIC WATER LINE
  - ⑭ CONSTRUCT 8" PCC SPORTS COURT
  - ⑮ INSTALL STAIRS



EARTHWORK QUANTITIES		
DESCRIPTIONS	CUT	FILL
CLASSROOMS	1,130 CY	650 CY
SPORTS COURT/PLAYGROUND	100 CY	550 CY
NORTHEAST PARKING LOT	1,250 CY	0 CY
TOTAL	2,480 CY	1,200 CY
CLASSROOM OVER EXCAVATION: 1,200 CY		



**ALVERNO HEIGHTS ACADEMY**  
**CONCEPTUAL GRADING AND PAVING PLAN**

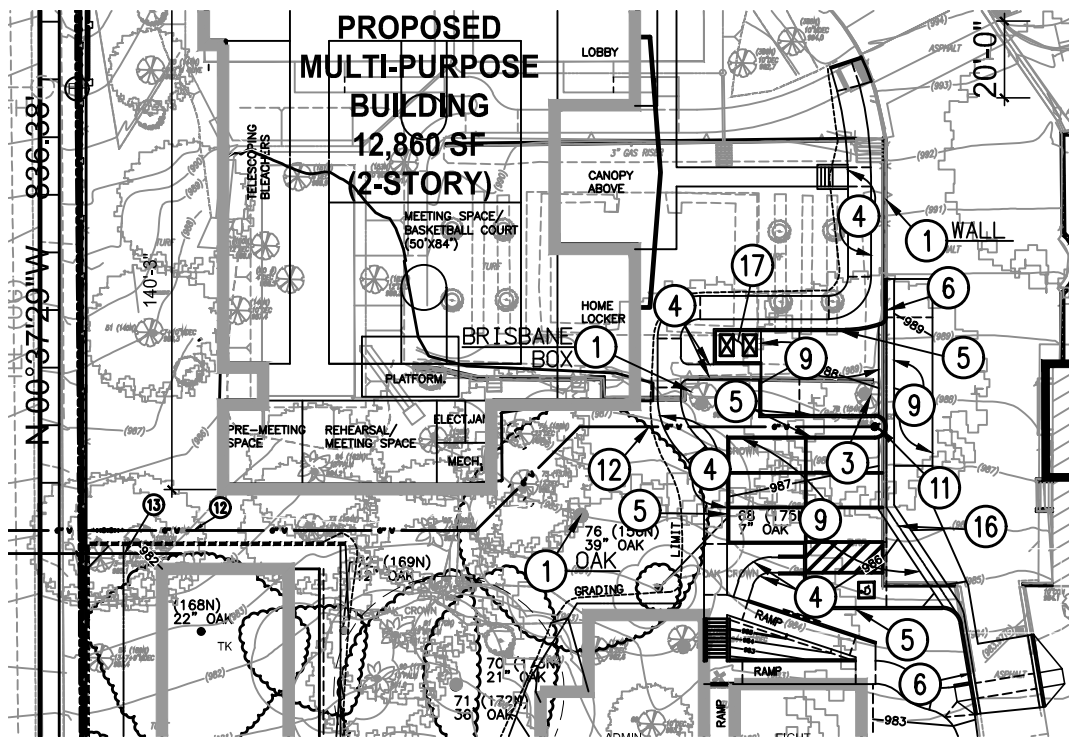
DATE: 6/29/21 SCALE: DRAWN BY: KPEDERSEN SHEET: C-1



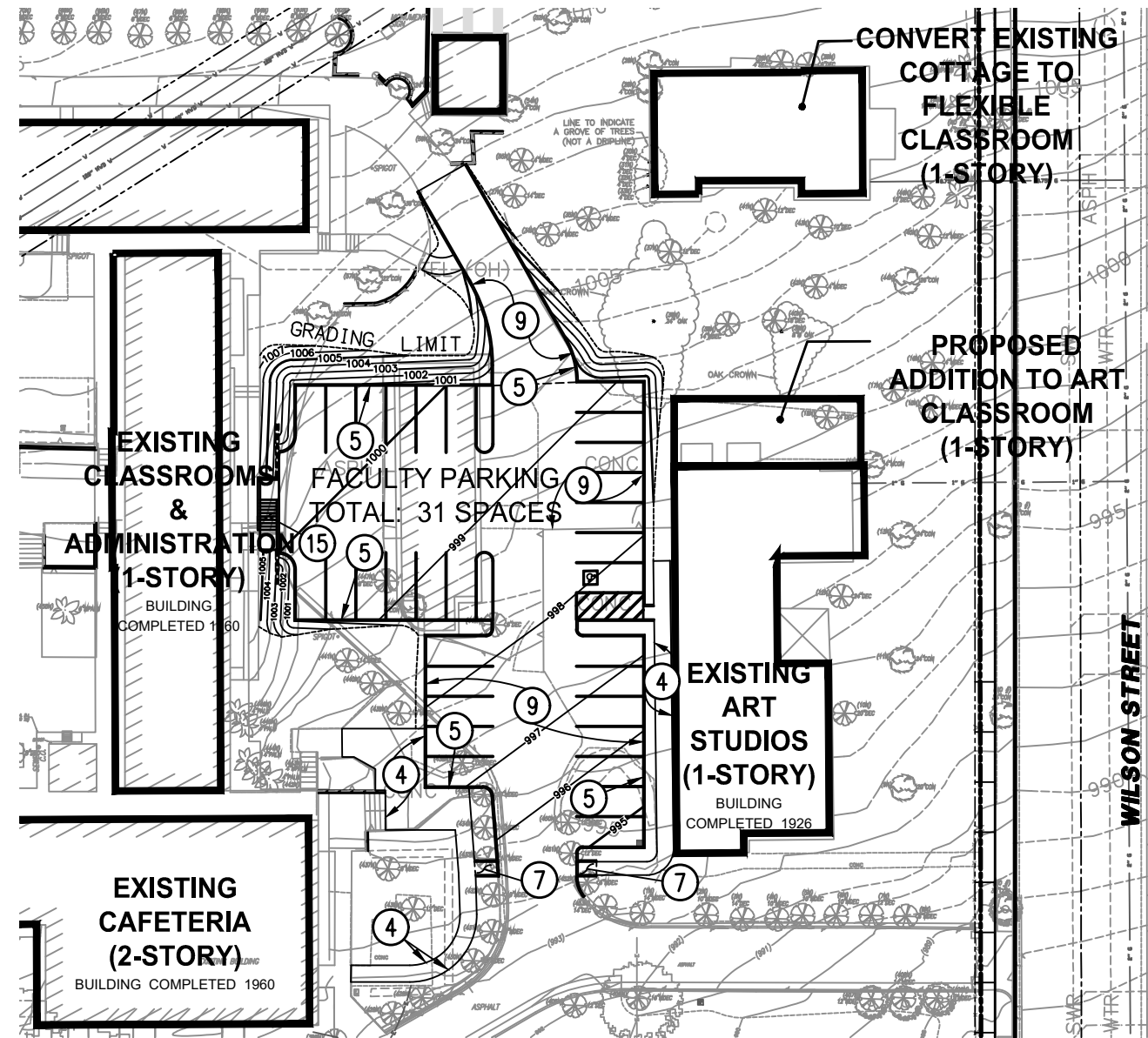
**CONSTRUCTION NOTES**

**SITE IMPROVEMENTS**

- ① PROTECT IN PLACE.
- ② REMOVE OAK TREE
- ③ REMOVE TREE
- ④ CONSTRUCT 4" PCC SIDEWALK
- ⑤ CONSTRUCT CURB
- ⑥ CONSTRUCT CURB AND GUTTER
- ⑦ CONSTRUCT CURB RAMP
- ⑧ CONSTRUCT ACCESSIBLE LOADING ZONE
- ⑨ CONSTRUCT AC PAVEMENT
- ⑩ INSTALL 4" SEWER
- ⑪ INSTALL FIRE HYDRANT
- ⑫ INSTALL 6" FIRE WATER LINE
- ⑬ INSTALL DOMESTIC WATER LINE
- ⑮ INSTALL STAIRS
- ⑯ CONSTRUCT PCC GUTTER
- ⑰ INSTALL TRASH ENCLOSURE
- ⑱ CONSTRUCT WALL



SEE SHEET C-1



**NORTHEAST PARKING LOT**

**RKA**  
**CONSULTING GROUP**  
 398 LEMON CREEK DRIVE, SUITE E, WALNUT, CA 91789  
 (909) 594-6702 - FAX (909) 594-2658  
 WWW.RKAGROUP.COM

**ALVERNO HEIGHTS ACADEMY**

**CONCEPTUAL GRADING AND PAVING PLAN**

DATE: 6/29/21 SCALE: DRAWN BY: KPEDERSEN SHEET: C-2